

A Message from Yamanashi-The Home of Mt. Fuji



Dear friends from all over the world

After The Great East Japan Earthquake, we have received a huge amount of warm support and help all over the world and we would like to use this opportunity to thank all our friends from all over the world.

Japan will use your encouragement as the strength to move forward along the path of recovery.

In order to process the recovery in the earthquake struck areas and among other places, Yamanashi needs to deepen its relationships with friends from all over the world and resume our lives by organizing more and more exchange events.

Yamanashi has not been influenced much by the earthquake and radiation. And so we will use our local tourism and products to help with the recovery of Japan.

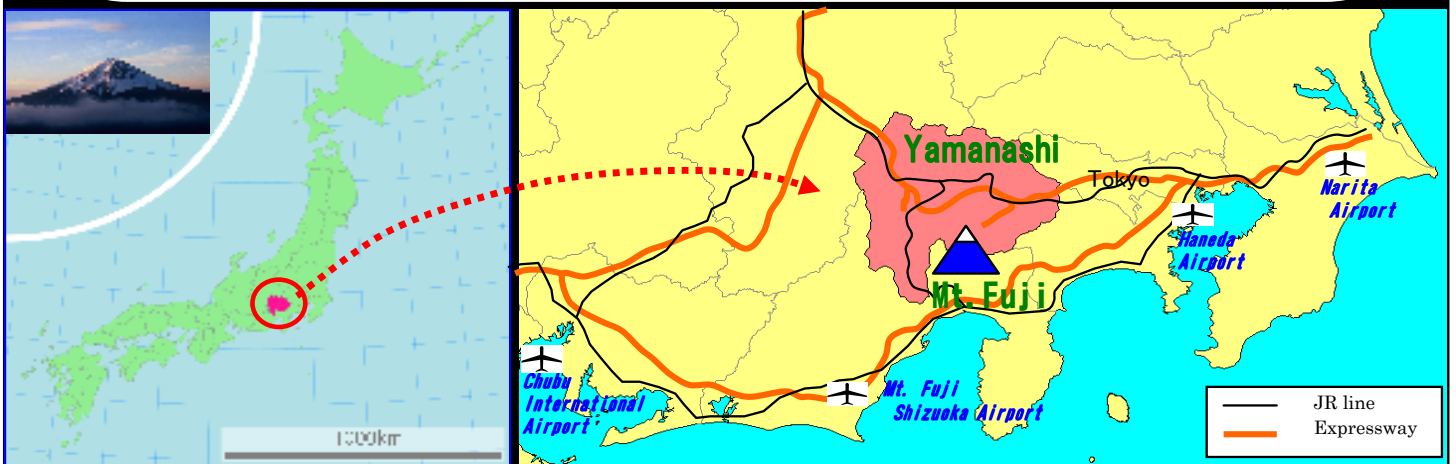
Therefore, while Yamanashi keeps offering high quality local products, we are here at Mt. Fuji, the symbol of Japan and at other safe tourist spots looking forward to hosting friends from all over the world.



がんばろう！日本

山梨県知事 横内正明

Governor of Yamanashi Prefecture, Shomei Yokouchi



Yamanashi Safety Information

We measure the radiation levels in the air and water everyday even though the Yamanashi Prefecture is located about 300km away from the Fukushima Daiichi Nuclear Power Plant.

According to the observation, we even compared the measurements before the earthquake and with other countries, and the detected result does not raise any health concerns.

2011.6.8 Detected level of radiation

Yamanashi	Tokyo	New York	Paris	Berlin	Singapore	Hong Kong	Beijing	Taipei	Seoul
0.045	0.06	0.094	0.03-0.08	0.069-0.087	0.08	0.07-0.14	0.074	0.058	0.107

2011.6.8 Tap water radiation inspection results in Yamanashi

Sampling Date	Iodine-131	Cesium-134, Cesium-137
2011/6/8	Not detectable	Not detectable

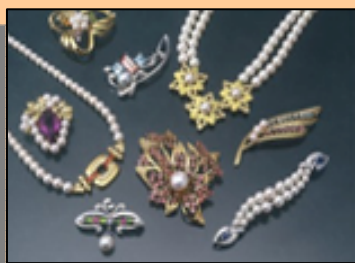
For most recent radiation level, please click here →http://www.jnto.go.jp/eq/eng/04_recovery.htm

About Yamanashi

Yamanashi is located right next to Tokyo, the capital of Japan. Yamanashi is a very beautiful place which is surrounded by an abundance of natural resources. Both the production and quality of peaches, grapes, and plums in Yamanashi is rated number one in Japan.

Yamanashi is also the main centre for Japanese wine, as it is the place of origin and has the largest wine production in Japan. The advanced diamond processing technology makes Yamanashi one of the production leaders in Japan.

In addition, there are a lot of hot springs which have been blessed by the abundance of natural resources. Every year, a large number of people come to visit Yamanashi because of its unique Japanese image of the local products and tourist spots.



Please find more Information about Yamanashi tourism (also in different languages) on the "Home of Mt. Fuji", the official website for Yamanashi Tourism.

<http://www.yamanashi-kankou.jp/english/index.html>

Be sure to check out the "Life in Yamanashi - Home of Mt. Fuji" blog where foreign residents share their lives and stories in Yamanashi !

<http://www.yamanashi-kankou.jp/english/message/index.html>



International Tourism Promotion Section
International Affairs Division
Tourism Department

Yamanashi Prefectural Government

Tel +81-55-223-1620

Fax +81-55-223-1438

Yamanashi Tourism Organization

Tel +81-55-231-2722

Fax +81-55-221-3040